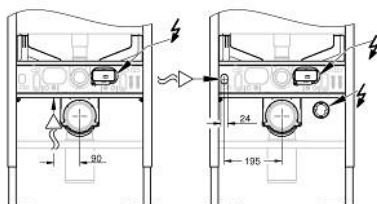
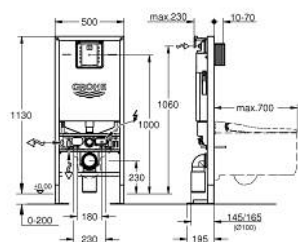


39 599 000 **RAPID SLX ELEMENT FOR WC, 1.13 M INSTALLATION HEIGHT WITH INTEGRATED SOCKET**



MÔ TẢ SẢN PHẨM (1/2)

- for free-standing installation, for on-the-wall installations or studded walls
- with integrated socket for shower toilets (power)
- ready for shower toilets (water)
- suitable for installation of 70 cm toilets
- small revision shaft for small flush plates
- powder coated steel frame, self-supporting
- for dry-cladding, completely pre-assembled
- with fixed connections
- lockable
- fixing material
- 2 WC fixing bolts
- fixing device for ceramic
- distance of fixing bolts 180/230 mm
- adapter 100 mm
- 90° rotatable PVC outlet bend 100 mm
- spacer Ø 80 mm
- inlet and outlet connecting set
- flushing cistern GDX, 6 l, containing following features:
 - adjustment ex factory 6l and 3l
- pneumatic discharge valve offering 3 modes of operation: dual flush or start/stop or single flush
- water inlet inside
- water supply from right, back or top
- low noise (group I acc. to German Noise Specification)
- fully insulated against condensation
- ½" water supply connection including integrated angle valve and push fit flexible hose union
- no tools required for the installation of the inspection shaft incl. protection during construction phase
- for vertical use
- including wall brackets 38 558 00M for on-the-wall installation
- including flow manager

Pure Freude
an Wasser

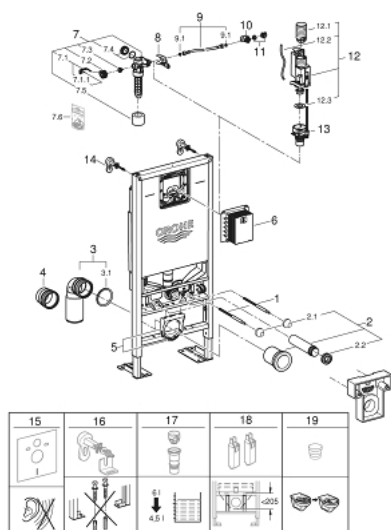


39 599 000 **RAPID SLX ELEMENT FOR WC, 1.13 M INSTALLATION HEIGHT WITH INTEGRATED SOCKET**

MÔ TẢ SẢN PHẨM (2/2)

- reduces flow of the flush
- prevents overspill in rimless toilets
- easy flow regulation via inspection shaft without removing the valves

39 599 000 **RAPID SLX ELEMENT FOR WC, 1.13 M INSTALLATION HEIGHT WITH INTEGRATED SOCKET**



PHỤ KIỆN LẮP ĐẶT, tháng 1 2020 – now

- 1: Threaded bolt (Order-nr. 4276400M)
- 2: WC inlet and outlet connecting set (Order-nr. 37311K00)
- 2.1: Basin fastening (Order-nr. 43511SH0)
- 2.2: Connector (Order-nr. 37119000)
- 3: PVC waste bend (Order-nr. 42216000)
- 4: Distance pipe 3" (Order-nr. 42766000)
- 5: Support for outlet bend (Order-nr. 42243000)
- 6: Revision shaft for small flush plates (Order-nr. 40911000)
- 7: Filling valve (Order-nr. 42583000)
- 7.1: Lever (Order-nr. 43734000)
- 7.1.1: Ball seal dia. 9x6.8 mm (Order-nr. 4377000M)
- 7.2: Valve head (Order-nr. 43536000)
- 7.3: Membrane (Order-nr. 4375800M)
- 7.4: Screw cap (Order-nr. 43735000)
- 7.5: Valve float, 5 pcs. (Order-nr. 4379100M)
- 7.6: Repl. kit f. seal (Order-nr. 43722000)*
- 8: Support device (Order-nr. 42246000)
- 9: Tube (Order-nr. 42233000)
- 9.1: Seat washer (Order-nr. 0319100M)
- 10: Dual Flush discharge valve AV1 (Order-nr. 42320000)
- 10.1: Extension for overflow pipe (Order-nr. 42313000)
- 10.2: pneumatic hose (Order-nr. 42319000)
- 10.3: Ball seal dia. 9x6.8 mm (Order-nr. 42310000)
- 11: Valve seat (Order-nr. 42593000)
- 12: Wall union (Order-nr. 3855800M)
- 13: Set for noise protection (Order-nr. 37131000)*
- 14: Xtra wall brackets, flexible placing (Order-nr. 38733000)*
- 15: Accessory (Order-nr. 39607000)*
- 16: Extension for Rapid SL and Rapid SLX (Order-nr. 38629001)*

* Phụ kiện đặc biệt