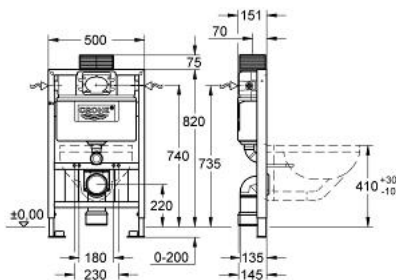


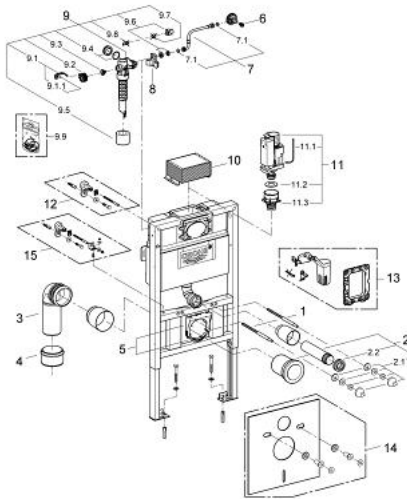
38 898 000 **RAPID SL** **FOR WALL-HUNG WC**



MÔ TẢ SẢN PHẨM

- with vertical support for WC bowls with a bearing area of less than 20 cm
- with flushing cistern 6 - 9 l
- 0.82 m installation height
- for on-the-wall installations or studded walls
- powder coated steel frame, self-supporting
- for dry-cladding, completely pre-assembled
- with fixed connections
- quick adjustment, lockable
- fixing material
- TÜV approved
- 2 WC fixing bolts
- fixing device for ceramic
- distance of fixing bolts 180/230 mm
- outlet bend \varnothing 80 mm
- depth adjustable
- reducer \varnothing 80/100 mm
- inlet and outlet connecting set
- flushing cistern 6 - 9 l
- pneumatic discharge valve offering 3 modes of operation: dual flush or start/stop or single flush
- front or top actuation
- water supply from left/right or back
- low noise (group I acc. to German Noise Specification)
- insulated against condensation
- $\frac{1}{2}$ " water supply connection including integrated angle valve and push fit flexible hose union
- inspection shaft with protecting block
- without accessories for on-the-wall installation
- without wall plate/actuation
- Công nghệ GROHE EcoJoy tiết kiệm nước và đảm bảo lưu lượng hoàn hảo

38 898 000 **RAPID SL** **FOR WALL-HUNG WC**



PHỤ KIỆN LẮP ĐẶT, tháng 6 2012 – now

- 1: Threaded bolt (Order-nr. 4276400M)
- 2: WC inlet and outlet connecting set (Order-nr. 37311K00)
- 2.1: Basin fastening (Order-nr. 43511SH0)
- 2.2: Connector (Order-nr. 37119000)
- 3: PP-outlet bend Ø 90 mm (Order-nr. 42327000)
- 4: 4" Outlet Adaptor F Rapid SI (Order-nr. 42242000)
- 5: Support for outlet bend (Order-nr. 42243000)
- 6: Headpart (Order-nr. 42385000)
- 7: Overflow Sleeve (Order-nr. 43325000)
- 7.1: Seat washer (Order-nr. 0319100M)
- 8: Support device (Order-nr. 42195000)
- 9: Filling valve (Order-nr. 37095000)
- 9.1: Lever (Order-nr. 43734000)
- 9.1.1: Ball seal dia. 9x6.8 mm (Order-nr. 4377000M)
- 9.2: Valve head (Order-nr. 43536000)
- 9.3: Membrane (Order-nr. 4375800M)
- 9.4: Screw cap (Order-nr. 43735000)
- 9.5: Valve float, 5 pcs. (Order-nr. 4379100M)
- 9.6: Repl. kit f. seal (Order-nr. 43722000)*
- 10: inspection shaft for flushing cistern (Order-nr. 42326000)
- 11: Discharge valve AV1 complete (Order-nr. 42314000)
- 11.1: pneumatic hose (Order-nr. 42319000)
- 11.2: Ball seal dia. 9x6.8 mm (Order-nr. 42310000)
- 11.3: Valve seat for GD2 (Order-nr. 42315000)
- 12: Wall union (Order-nr. 3855800M)*
- 13: Retro-fit set (Order-nr. 38796000)*
- 14: Set for noise protection (Order-nr. 37131000)*
- 15: Xtra wall brackets, flexible placing (Order-nr. 38733000)*

* Phụ kiện đặc biệt