

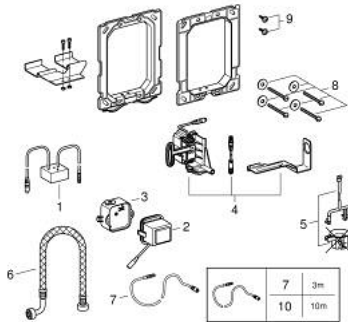
## 38 778 000 **RADIO ELECTRONIC**



### MÔ TẢ SẢN PHẨM

- for an additional wall plate for manual actuation
- for WC
- receiver modul 868.4 MHz
- for support rails for the disabled with radio transmitter of Hewi, Keuco, Lehnert, Normbau, Pressalit, Deubad, RUD, Emco, FRELU, FSB, Delabie, PSA, EWAR (Wagner Ewar), TECE, RehaGrip, Sam, Hergert, Fa. Provex
- for flushing cistern GD 2
- for flushing cistern 6 l
- Lắp đặt âm tường
- servo motor
- with transformer 100-230 V AC, 50-60 Hz, 6 V DC
- adjustable flush volume
- adjustable flow time
- 72 h flushing can be activated
- with extension cable, 3.00 m length, for connecting transformer and electronic

## 38 778 000 **RADIO ELECTRONIC**



### PHỤ KIỆN LẮP ĐẶT , tháng 5 2023 – now

- 1: Wireless receiver (Order-nr. 42336000)
- 2: Transformer (Order-nr. 42278000)
- 3: Transformer connecting box (Order-nr. 42279000)
- 4: Servo motor (Order-nr. 42612000)
- 5: Pop-up rod for servo motor (Order-nr. 43306000)
- 6: Hose (Order-nr. 43307000)
- 7: Extension cable (Order-nr. 36221000)
- 8: Fixing set (Order-nr. 4308500M)
- 9: Screw dia. 4x52 mm (Order-nr. 6636200M)
- 10: Extension cable (Order-nr. 36222000)\*

\* Phụ kiện đặc biệt