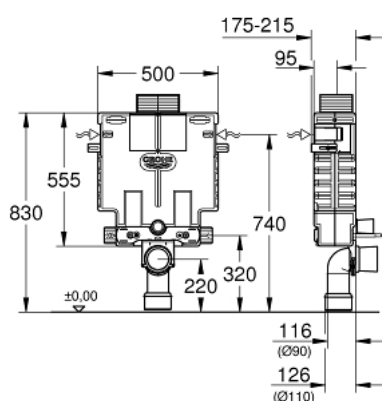


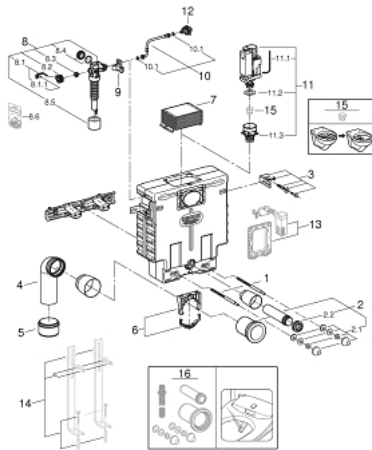
## 38 415 001 UNISET ELEMENT FOR WC, 0.82 M INSTALLATION HEIGHT



### MÔ TẢ SẢN PHẨM

- with flushing cistern 6 - 9 l
- front or top actuation
- sound-insulating EPS module for masonry-in
- rail adaptors for modular fixing
- for single or rail installation
- wall rail with fixing accessories for single installation
- 2 WC fixing bolts
- distance of fixing bolts 180/230 mm
- fixing device for ceramic
- outlet bend Ø 90 mm
- depth adjustable
- inlet and outlet connecting set
- flushing cistern 6 - 9 l containing the following features:
  - pneumatic discharge valve offering 3 modes of operation: dual flush or start/stop or single flush
- water supply from left/right or top
- low noise (group I acc. to German Noise Specification)
- insulated against condensation
- ½" water supply connection
- angle valve ½"
- inspection shaft with protecting block
- preparation for shower toilets with additional accessory 40 899 000 (sold separately)
- for mounting of small flush plates please order revision shaft 40 950 000 (sold separately)

## 38 415 001 UNISET ELEMENT FOR WC, 0.82 M INSTALLATION HEIGHT



### PHỤ KIỆN LẮP ĐẶT , tháng 11 2021 – now

- 1: Threaded bolt (Order-nr. 4276400M)
- 2: WC inlet and outlet connecting set (Order-nr. 37311K00)
- 2.1: Basin fastening (Order-nr. 43511SH0)
- 2.2: Connector (Order-nr. 37119000)
- 3: Fastening set, complete, 2 pcs. (Order-nr. 4276300M)
- 4: PP-outlet bend Ø 90 mm (Order-nr. 42327000)
- 5: 4" Outlet Adaptor F Rapid SI (Order-nr. 42242000)
- 6: Support for outlet bend (Order-nr. 42243000)
- 7: inspection shaft for flushing cistern (Order-nr. 42326000)
- 8: Filling valve (Order-nr. 37095000)
- 8.1: Lever (Order-nr. 43734000)
- 8.1.1: Ball seal dia. 9x6.8 mm (Order-nr. 4377000M)
- 8.2: Valve head (Order-nr. 43536000)
- 8.3: Membrane (Order-nr. 4375800M)
- 8.4: Screw cap (Order-nr. 43735000)
- 8.5: Valve float, 5 pcs. (Order-nr. 4379100M)
- 8.6: Repl. kit f. seal (Order-nr. 43722000)\*
- 9: Support device (Order-nr. 42195000)
- 10: Overflow Sleeve (Order-nr. 43325000)
- 10.1: Seat washer (Order-nr. 0319100M)
- 11: Discharge valve AV1 complete (Order-nr. 42314000)
- 11.1: pneumatic hose (Order-nr. 42319000)
- 11.2: Ball seal dia. 9x6.8 mm (Order-nr. 42310000)
- 11.3: Valve seat for GD2 (Order-nr. 42315000)
- 12: Water connection (Order-nr. 48561000)\*
- 13: Retro-fit set (Order-nr. 38796000)\*
- 14: Support feet (Order-nr. 37304000)\*
- 15: Flow restrictor (Order-nr. 42300000)\*
- 16: Retrofit kit for shower toilets Sensia Arena and IGS (Order-nr. 40899000)\*

\* Phụ kiện đặc biệt