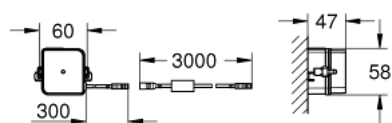
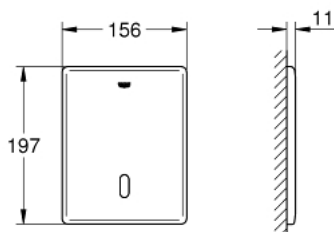


38 393 SD1 TECTRON SKATE INFRA-RED ELECTRONIC FOR WC FLUSH VALVE



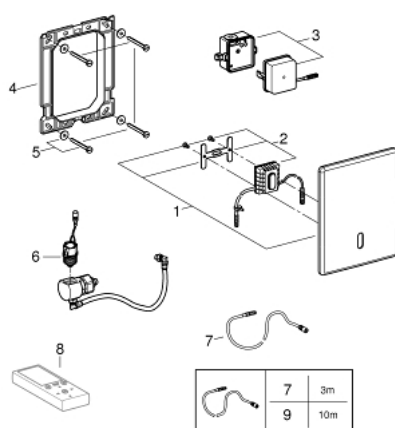
MÔ TẢ SẢN PHẨM

- Colour: stainless steel
- with transformer 100-230 V AC, 50-60 Hz, 6 V DC
- Lắp đặt âm tường
- front plate 156 x 197 mm
- infra-red control
- solenoid valve
- 7 pre-set programs:
- CE approved
- for use with concealed WC flush valve 37 048 000 and 38 519 001



38 393 SD1 TECTRON SKATE INFRA-RED ELECTRONIC FOR WC FLUSH VALVE

PHỤ KIỆN LẮP ĐẶT, tháng 3 2016 – now



1: Top plate (Order-nr. 42449SD0)

2: Electronic (Order-nr. 42455000)

3: Switching power supply (Order-nr. 42470000)

4: Frame (Order-nr. 42736000)

5: Fixing set (Order-nr. 4308500M)

6: Solenoid valve (Order-nr. 42469000)

7: Extension cable (Order-nr. 36221000)

8: Remote control (Order-nr. 36407001)*

9: Extension cable (Order-nr. 36222000)*

* Phụ kiện đặc biệt