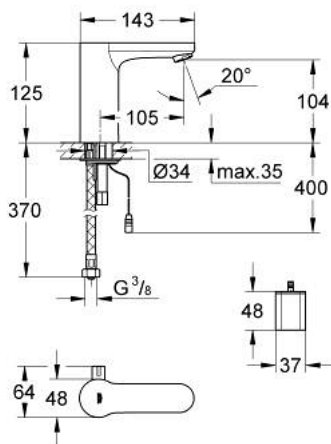


36 327 000 EUROSMART COSMOPOLITAN E INFRA-RED ELECTRONIC BASIN MIXER WITH MIXING DEVICE AND ADJUSTABLE TEMPERATURE LIMITER

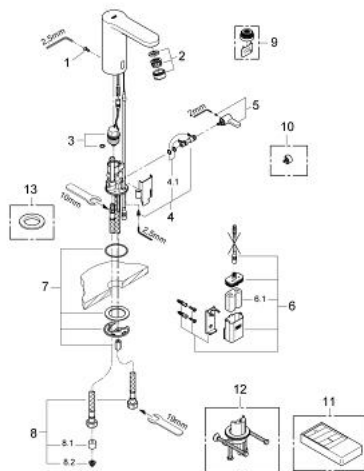


MÔ TẢ SẢN PHẨM

- Colour: chrome
- Vòi chậu tay gạt
- 6V lithium battery, type CR-P2
- mixing device with adjustable hot water limiter
- with integrated solenoid valve
- external battery
- multistage battery status display
- Dây cấp linh hoạt
- non-return valve
- Công nghệ lắp đặt nhanh
- 7 pre-set programs:
 - with 24/72 hours autoflush
 - time or user dependent
 - with cleaning mode
 - safety stop after 60 sec.
 - additional functions by remote control:
 - adjustable flow time
 - adjustable reflection range by remote
 - activation of thermal disinfection for 3.5 or 11 min by hand
- Bộ lọc bụi bẩn
- Cấp chống ồn 1 theo DIN4109
- type of protection faucet IP 59K
- CE approved
- Đầu vòi lọc GROHE EcoJoy giới hạn lưu lượng ở mức 5,7 lít/phút
- Bề mặt Chrome GROHE Long-Life
- Công nghệ GROHE EcoJoy tiết kiệm nước và đảm bảo lưu lượng hoàn hảo
- Áp suất tối thiểu 1,0 bar



36 327 000 EUROSMART COSMOPOLITAN E INFRA-RED ELECTRONIC BASIN MIXER WITH MIXING DEVICE AND ADJUSTABLE TEMPERATURE LIMITER



PHỤ KIỆN LẮP ĐẶT, tháng 8 2010 – now

- 1: Screw (Order-nr. 4283100M)
- 2: Mousseur (Order-nr. 42832000)
- 3: Solenoid valve (Order-nr. 42399000)
- 4: Mixer spindle (Order-nr. 42402000)
- 4.1: Seat washer (Order-nr. 4284000M)
- 5: Mixing lever (Order-nr. 42401000)
- 5.1: Seat washer (Order-nr. 4284000M)
- 6: Battery housing with battery (Order-nr. 42393000)
- 6.1: Battery (Order-nr. 42886000)
- 7: Mounting set (Order-nr. 42400000)
- 8: Connection hose (Order-nr. 42403000)
- 8.1: Non-return valve (Order-nr. 4240400M)
- 8.2: Filter (Order-nr. 4241300M)
- 9: Mousseur (Order-nr. 36133000)*
- 10: Security cover cap (Order-nr. 42408000)*
- 11: Infra-red remote control (Order-nr. 36206000)*
- 12: Rotation lock (Order-nr. 36276000)*
- 13: Escutcheon (Order-nr. 36370000)*

* Phụ kiện đặc biệt