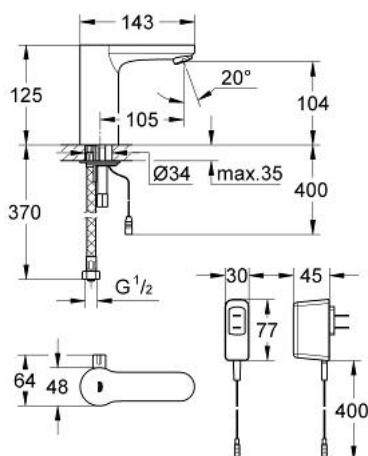


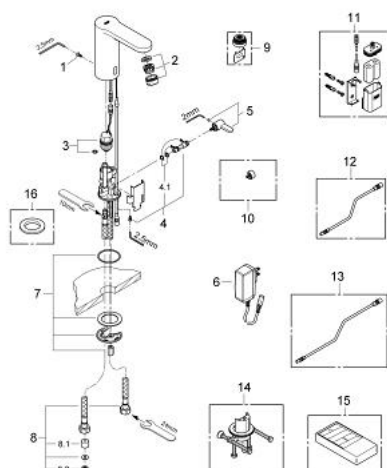
36 326 000 EUROSMART COSMOPOLITAN E INFRA-RED ELECTRONIC BASIN MIXER WITH MIXING DEVICE AND ADJUSTABLE TEMPERATURE LIMITER



MÔ TẢ SẢN PHẨM

- Colour: chrome
- with plug transformer 100-230 V AC, 50-60 Hz, 6 V DC
- with integrated solenoid valve
- Vòi chậu tay gạt
- for 1/2" angle valve
- Công nghệ lắp đặt nhanh
- 7 pre-set programs:
- with 24/72 hours autoflush
- time or user dependent
- with cleaning mode
- safety stop after 60 sec.
- additional functions by remote control:
- adjustable flow time
- adjustable reflection range by remote
- activation of thermal disinfection for 3.5 or 11 min by hand
- Đầu vòi lọc GROHE EcoJoy giới hạn lưu lượng ở mức 5,7 lít/phút
- Dây cấp linh hoạt
- non-return valve
- Bộ lọc bụi bẩn
- CE approved
- Công nghệ GROHE EcoJoy tiết kiệm nước và đảm bảo lưu lượng hoàn hảo
- Bề mặt Chrome GROHE Long-Life
- Áp suất tối thiểu 1,0 bar

36 326 000 EUROSMART COSMOPOLITAN E INFRA-RED ELECTRONIC BASIN MIXER WITH MIXING DEVICE AND ADJUSTABLE TEMPERATURE LIMITER



PHỤ KIỆN LẮP ĐẶT, tháng 8 2010 – now

- 1: Screw (Order-nr. 4283100M)
- 2: Mousseur (Order-nr. 42832000)
- 3: Solenoid valve (Order-nr. 42399000)
- 4: Mixer spindle (Order-nr. 42402000)
- 4.1: Seat washer (Order-nr. 4284000M)
- 5: Mixing lever (Order-nr. 42401000)
- 5.1: Seat washer (Order-nr. 4284000M)
- 6: Mains adaptor (Order-nr. 42392000)
- 7: Mounting set (Order-nr. 42400000)
- 8: connection hose (Order-nr. 42405000)
- 8.1: Non-return valve (Order-nr. 4240400M)
- 8.2: Dirt strainer (Order-nr. 0700200M)
- 9: Mousseur (Order-nr. 36133000)*
- 10: Security cover cap (Order-nr. 42408000)*
- 11: Battery housing with battery (Order-nr. 42393000)*
- 12: Extention cable (Order-nr. 36340000)*
- 13: Extention cable (Order-nr. 36341000)*
- 14: Rotation lock (Order-nr. 36276000)*
- 15: Infra-red remote control (Order-nr. 36206000)*
- 16: Escutcheon (Order-nr. 36370000)*

* Phụ kiện đặc biệt