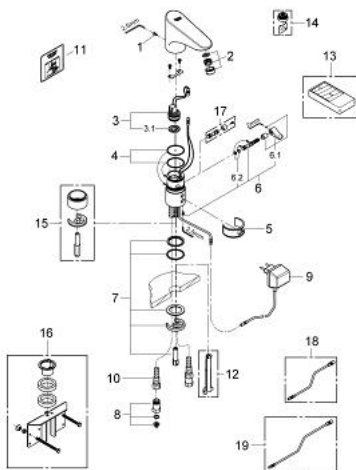


- Colour: chrome
- with plug transformer 230V, 50 Hz, 3,2VA
- Vòi chậu tay gạt

- Công nghệ lắp đặt nhanh
- safety stop after 60 sec.
- adjustable from 2 to 420 sec
- Functions to activate with remote control 36 206:
- automatic flushing after 1 or 3 days without use
- Thermal disinfection for 3,5 or 11 min
- mixing device with hot water stop-valve
- adjustable
- flow limiter 6 l/min
- Dây cấp linh hoạt
- non-return valve
- Bộ lọc bụi bẩn
- CE approved
- type of protection faucet IP 59K
- type of protection plug transformer IP 44
- Cấp chống ồn 1 theo DIN4109
- Công nghệ GROHE EcoJoy tiết kiệm nước và đảm bảo lưu lượng hoàn hảo
- Bề mặt Chrome GROHE Long-Life

36 015 000 EUROPLUS E INFRARED ELECTRONIC BASIN MIXER 1/2" WITH MIXING DEVICE



PHỤ KIỆN LẮP ĐẶT , tháng 6 2008 – now

- 1: Screw (Order-nr. 4283100M)
- 2: Mousseur (Order-nr. 42832000)
- 3: Solenoid valve (Order-nr. 43066000)
- 3.1: Dirt Strainer (Order-nr. 42798000)
- 4: Seat washer (Order-nr. 4283600M)
- 5: Cleaning clip (Order-nr. 42837000)
- 6: Lever (Order-nr. 42839000)
- 6.1: Mixing lever (Order-nr. 42838000)
- 6.2: Seat washer (Order-nr. 4284000M)
- 7: Fixing set (Order-nr. 42841000)
- 8: Non-return valve (Order-nr. 43431000)
- 9: Plug transformer (Order-nr. 43016000)
- 10: Flexible connection hose, 470 (Order-nr. 45484000)
- 11: Sticker with pictograph (Order-nr. 4217700M)
- 12: Disassembling key
(for Relexa Plus, Relexa Cosmopolitan face plate) (Order-nr. 19132000)*
- 13: Infra-red remote control (Order-nr. 36206000)*
- 14: Mousseur (Order-nr. 36133000)*
- 15: Socket (Order-nr. 36210000)*
- 16: Rotation lock (Order-nr. 42919000)*
- 17: Security cover cap (Order-nr. 36209000)*
- 18: Extension cable (Order-nr. 36221000)*
- 19: Extension cable (Order-nr. 36222000)*

* Phụ kiện đặc biệt