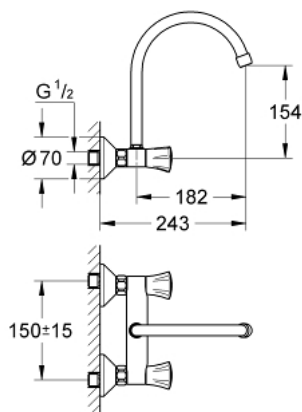


31 191 001 **COSTA L WALL SINK MIXER 1/2"**

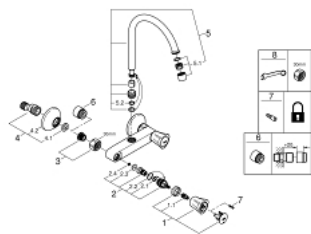


MÔ TẢ SẢN PHẨM

- Colour: chrome
- Thiết kế treo tường
- metal handles
- heat-insulated
- screwable
- Bề mặt mạ GROHE Long-Life
- GROHE Long-Life headparts
- Đầu vòi lọc
- tubular spout
- Có thể lựa chọn được diện tích quay: 0° / 150° / 360°
- Đầu nối dây sen
- maximum flow rate (at 3 bar): 13 l/min



31 191 001 **COSTA L WALL SINK MIXER 1/2"**



PHỤ KIỆN LẮP ĐẶT , tháng 6 2007 – now

- 1: Handle (Order-nr. 45994000)
- 1.1: Repl. kit f.handle fastening (Order-nr. 0538600M)
- 2: Headpart 1/2" (Order-nr. 07146000)
- 2.1: O-ring $\phi 6 \times \phi 2$ (Order-nr. 0128300M)
- 2.2: O-ring $\phi 18.2 \times \phi 1.7$ (Order-nr. 0392400M)
- 2.3: Ball seal dia. 9x6.8 mm (Order-nr. 0529100M)
- 3: Screw joint (Order-nr. 45044000)
- 4: S-union (Order-nr. 12075000)
- 4.1: Ball seal dia. 9x6.8 mm (Order-nr. 0138600M)
- 4.2: Escutcheon (Order-nr. 0221000M)
- 5: Spout (Order-nr. 13213000)
- 5.1: Mousseur (Order-nr. 13928000)
- 5.2: O-ring dia. 12x2 mm (Order-nr. 0128000M)
- 6: Extension 3/4", 20 mm (Order-nr. 0713000M)*
- 7: Screw for Costa/Avina products (Order-nr. 48013000)*
- 8: Special spanner (Order-nr. 19377000)*

* Phụ kiện đặc biệt