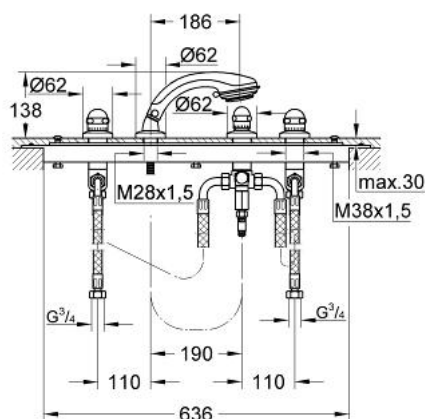


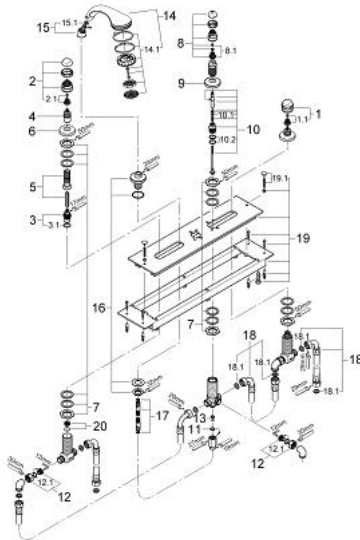
25 558 000 SENTOSA 4-HOLE BATH/SHOWER COMBINATION



MÔ TẢ SẢN PHẨM

- Colour: chrome
- for combination with Talentofill
- inlet-, pop-up- and waste system
- 2 concealed valves with ceramic headparts 180° 3/4"
- automatic diverter:
- Talentofill-inlet/handshower
- installation plate and base frame
- Relexa plus handshower Champagne
- metal shower hose
- connection hoses 600 mm 1/2"
- Bề mặt Chrome GROHE Long-Life

25 558 000 SENTOSA 4-HOLE BATH/SHOWER COMBINATION



PHỤ KIỆN LẮP ĐẶT, tháng 1 2002 – now

- 1: Sentosa handle 1/2" (Order-nr. 45538IP0)
- 1.1: Replacement handle connection kit (Order-nr. 45186000)
- 1.1.1: O-ring $\varnothing 18.2 \times \varnothing 1.7$ (Order-nr. 0392400M)
- 1.2: Guide ring (Order-nr. 0202100M)
- 2: Sentosa handle 1/2" red (Order-nr. 45539IP0)
- 2.1: Replacement handle connection kit (Order-nr. 45186000)
- 2.2: Guide ring (Order-nr. 0202100M)
- 3: Ceramic headpart 3/4", 180° (Order-nr. 45885000)
- 3.1: O-ring (Order-nr. 45583000)
- 4: Extension (Order-nr. 45204000)
- 5: Extension 20-80 (Order-nr. 45202000)
- 6: Escutcheon (Order-nr. 05042000)
- 7: Repl.kit f.shank fastening 3/4" (Order-nr. 45444000)
- 8: Handle (Order-nr. 45897IP0)
- 8.1: Replacement handle connection kit (Order-nr. 45186000)
- 9: Escutcheon (Order-nr. 09088000)
- 10: Diverter (Order-nr. 45896000)
- 10.1: O-ring $\varnothing 6 \times \varnothing 2$ (Order-nr. 0128300M)
- 10.2: Seat washer (Order-nr. 0120500M)
- 11: Seal $\varnothing 16 \times 2$ (Order-nr. 0140100M)
- 12: Screw joint (Order-nr. 45044000)
- 12.1: Seal dia. 15x2 mm (Order-nr. 0311900M)
- 13: Non-return valve (Order-nr. 08565000)
- 14: Hand shower 2 sprays (Order-nr. 28174000)
- 14.1: Coupling piece (Order-nr. 28635XX0)
- 14.2: Dirt strainer (Order-nr. 0700200M)
- 15: Coupling piece (Order-nr. 47318000)
- 15.1: O-ring $\varnothing 11 \times \varnothing 2$ (Order-nr. 0122400M)
- 16: Spray holder (Order-nr. 45836IX0)
- 17: Metal hose (Order-nr. 28146000)
- 18: Flexible hose (Order-nr. 45446000)
- 18.1: Ball seal dia. 9x6.8 mm (Order-nr. 0138600M)
- 19: Mounting frame (Order-nr. 45051000)
- 19.1: Fixing set (Order-nr. 45172000)
- 20: Seat 3/4" (Order-nr. 45345000)