

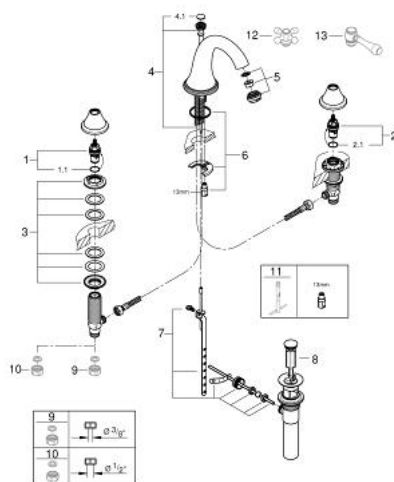
## 20 801 BE0 **GENEVA 3-HOLE BASIN MIXER**



### **MÔ TẢ SẢN PHẨM**

- Colour: polished nickel
- without handles
- high fixed cast spout with Mousseur
- Lõi van ceramic 1/2", xoay 90°
- Bộ xả chậu 1 1/4"
- Đai ốc nối để khoan 10,5 mm
- Dây cấp linh hoạt, chịu được áp suất giữa vòi phun và van khóa hai bên
- for Geneva cross and lever handles 18 733 / 18 734
- Bề mặt Chrome GROHE Long-Life

## 20 801 BE0 GENEVA 3-HOLE BASIN MIXER



### PHỤ KIỆN LẮP ĐẶT, tháng 7 2016 – now

- 1: Ceramic headpart, 1/2" (Order-nr. 45882000)
- 1.1: O-ring  $\phi 18.2 \times \phi 1.7$  (Order-nr. 0392400M)
- 2: Ceramic headpart, 1/2" (Order-nr. 45883000)
- 2.1: O-ring  $\phi 18.2 \times \phi 1.7$  (Order-nr. 0392400M)
- 3: Shank fastening assembly (Order-nr. 45025000)
- 4: Pop-up rod (Order-nr. 45791BE0)
- 4.1: Marking piece (Order-nr. 45763L00)
- 5: Flow straightener (Order-nr. 13931BE0)
- 6: Shank mounting kit (Order-nr. 46249000)
- 7: Ball rod (Order-nr. 48332000)
- 9: Coupling nut 1/2" x 10.5 mm (Order-nr. 1290100M)\*
- 10: Coupling nut 1/2" x 14.5 mm (Order-nr. 1290200M)\*
- 11: Mounting wrench (Order-nr. 19017000)\*
- 12: Sinfonia cross handles (Order-nr. 18733BE0)\*
- 13: Lever Handle (Order-nr. 18734BE0)\*

\* Phụ kiện đặc biệt