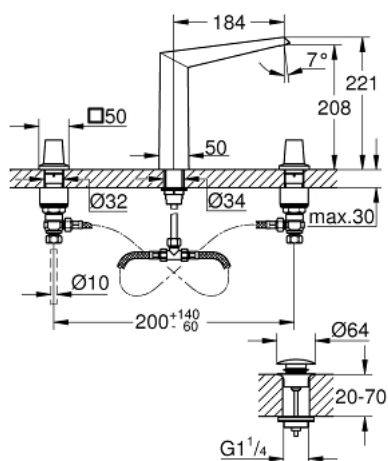


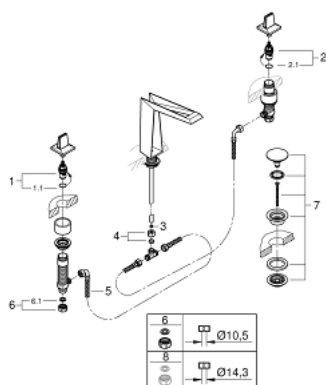
## 20 603 SD0 ALLURE BRILLIANT ICON 3D 3-HOLE DECK-MOUNT BASIN MIXER



### MÔ TẢ SẢN PHẨM

- Colour: stainless steel
- GROHE Water Saving 5.0 l/min flow limiter
- projection 161 mm
- red and blue markings on handles for hot and cold water
- valves hot/cold with ceramic headparts
- Push-open waste set 1 1/4"
- Dây cấp linh hoạt, chịu được áp suất giữa vòi phun và van khóa hai bên
- technical data
- flow pressure min 0.5 bar
- recommended pressure 1.0 - 5.0 bar
- if static pressure is more than 5 bar fit pressure reducer
- avoid major pressure differences between cold and hot water supply
- flow rate at 3 bar flow pressure: approx. 5 l/min
- max. temperature hot water inlet: 80°C
- recommended temperature hot water inlet (energy saving): 60°C

## 20 603 SD0 ALLURE BRILLIANT ICON 3D 3-HOLE DECK-MOUNT BASIN MIXER



### PHỤ KIỆN LẮP ĐẶT , tháng 9 2018 – now

- 1: Ceramic headpart, 1/2" (Order-nr. 45882000)
- 1.1: O-ring  $\varnothing 18.2 \times \varnothing 1.7$  (Order-nr. 0392400M)
- 2: Ceramic headpart, 1/2" (Order-nr. 45883000)
- 2.1: O-ring  $\varnothing 18.2 \times \varnothing 1.7$  (Order-nr. 0392400M)
- 3: Flow limiter (Order-nr. 48160000)
- 4: Compression union 3/8" (Order-nr. 12914000)
- 5: Flexible connection hose (Order-nr. 45704000)
- 6: Coupling nut 1/2" x 10.5 mm (Order-nr. 1290100M)
- 6.1: Fibre seal dia. 12x2 mm (Order-nr. 0138900M)
- 7: Waste set with push-open plug (Order-nr. 65807000)
- 8: Coupling nut 1/2" x 14.5 mm (Order-nr. 1290200M)\*

\* Phụ kiện đặc biệt