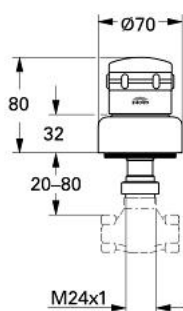


## 19 823 L00 CHIARA CONCEALED VALVE EXPOSED PART

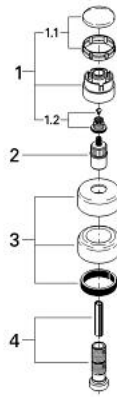


### MÔ TẢ SẢN PHẨM

- Colour: white
- for concealed valves, 1/2", 3/4", 1"
- from 20-80 mm
- screw flange
- screwable
- Marking: neutral
- Bề mặt Chrome GROHE LongLife



## 19 823 L00 CHIARA CONCEALED VALVE EXPOSED PART



**PHỤ KIỆN LẮP ĐẶT**, tháng 1 1991 – now

1: Handle (Order-nr. 45493L00)

1.1: Cap (Order-nr. 47452L00)

1.2: Replacement handle connection kit (Order-nr. 45186000)

1.2.1: O-ring  $\varnothing 18.2 \times \varnothing 1.7$  (Order-nr. 0392400M)

1.3: Ring (Order-nr. 03070000)

2: Extension (Order-nr. 45204000)

3: Escutcheon (Order-nr. 45339L00)

4: Extension 20-80 (Order-nr. 45202000)